

Lochgilphead Parish Church

Volume 17 Issue 2

March/April 2019

www.lpchurch.co.uk

The

LINK

Scottish Charity  
SCO 16311



MESSAGE FROM THE MANSE

March 2019

Dear Friends,

This will be our final Link until after the summer as we are going to take some time to think about how we want to use the Link. It costs a considerable amount of money to print each time and so that we are not wasting money, we want to rethink its purpose and therefore the content.

Roberta has been editing the Link for two years now but has decided to step down and so this is the perfect opportunity to rethink how we use it. We are very grateful to Roberta for the work she has done and want to record our thanks.

I am involved with an online craft group and on reading the blog that is produced by the owner of the company, I came across a stamp which read: In the winds of change, we find a new direction.

The Church of Scotland is facing the winds of change. Congregations are facing the winds of change. The General Assembly will be presented with a Radical Plan for the Church which leave many feeling threatened but in building the Kingdom of God as opposed to our own little empires, the winds of change may guide us in a new direction and in terms of our faith that may well be a real positive step forward.

Jesus called us to follow Him. He said foxes have holes and birds of the air have nests but the Son of Man has nowhere to lay His head. He did not call us to build empires. He did not even call us to put down roots except in His Son. He called us to move rather to stand still because that is the only way we can follow Him.

In the story of blind Bartimaeus, we see him calling out to Jesus as Jesus was about to pass by. He called out to Him and he then followed Him. Is Jesus passing us by or are we calling out to Him so that we might follow Him and walk with Him into His future.

It is God's Kingdom we are called to build, not our empires. Let's look for ways to shake off the shackles of the past that we might be free in the present and ready to face the future.

Beginning on the 10th March at 6.30 we are starting a study on the King's Speech called Finding A Voice. Come and join us for that. It will run for five weeks and may reignite our faith and encourage us to live it rather than preserving it for posterity.

Best wishes,  
Hilda C. Smith

Inside  
this  
Issue

Message  
from the  
Manse

Bringing  
small chil-  
dren to  
church.

Reminders

Steward-  
ship

Knitting

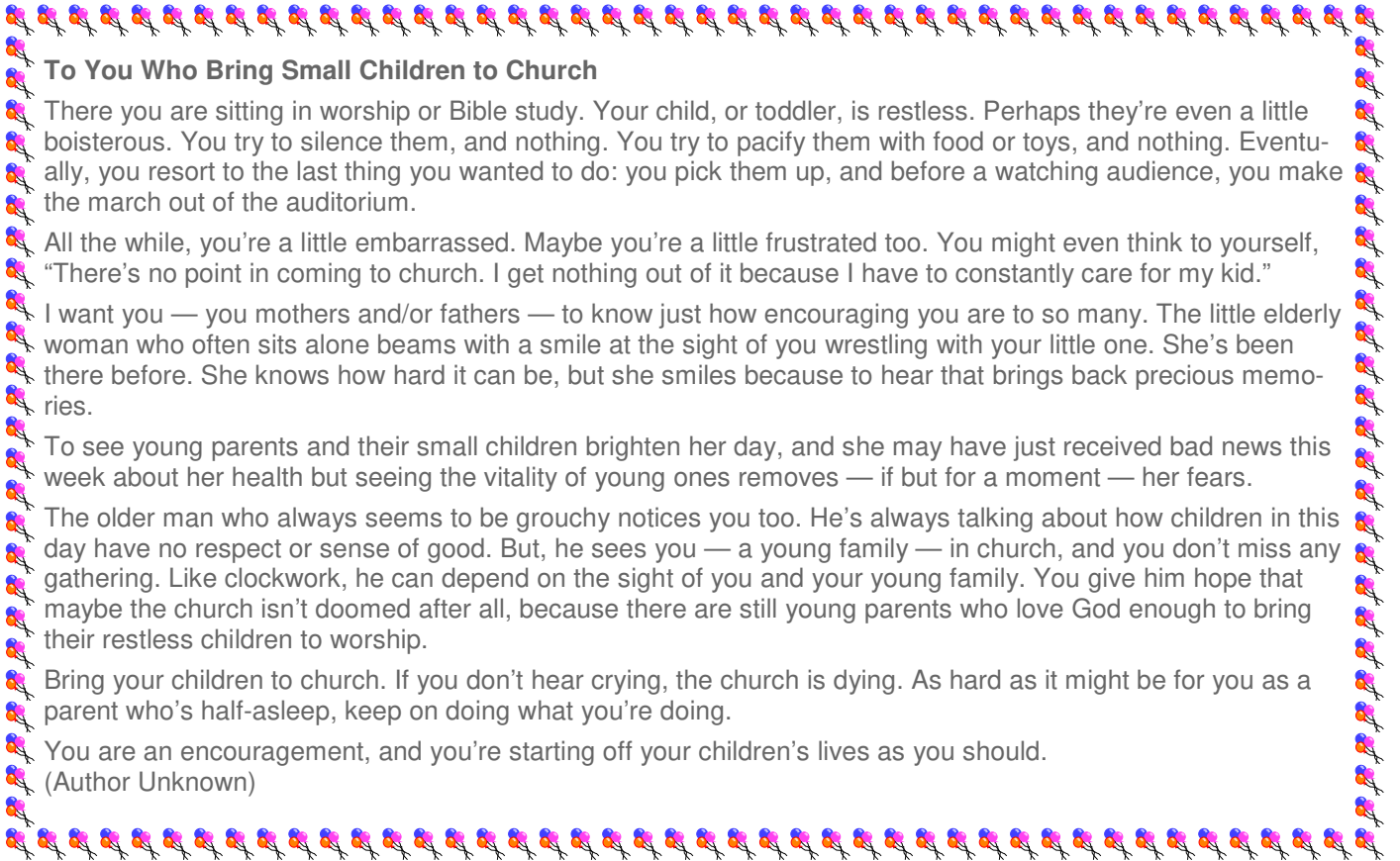
Parish  
Notices

Cross-  
word.

Laughter  
lines

Kids'  
Corner

Rotas and  
What's On



### To You Who Bring Small Children to Church

There you are sitting in worship or Bible study. Your child, or toddler, is restless. Perhaps they're even a little boisterous. You try to silence them, and nothing. You try to pacify them with food or toys, and nothing. Eventually, you resort to the last thing you wanted to do: you pick them up, and before a watching audience, you make the march out of the auditorium.

All the while, you're a little embarrassed. Maybe you're a little frustrated too. You might even think to yourself, "There's no point in coming to church. I get nothing out of it because I have to constantly care for my kid."

I want you — you mothers and/or fathers — to know just how encouraging you are to so many. The little elderly woman who often sits alone beams with a smile at the sight of you wrestling with your little one. She's been there before. She knows how hard it can be, but she smiles because to hear that brings back precious memories.

To see young parents and their small children brighten her day, and she may have just received bad news this week about her health but seeing the vitality of young ones removes — if but for a moment — her fears.

The older man who always seems to be grouchy notices you too. He's always talking about how children in this day have no respect or sense of good. But, he sees you — a young family — in church, and you don't miss any gathering. Like clockwork, he can depend on the sight of you and your young family. You give him hope that maybe the church isn't doomed after all, because there are still young parents who love God enough to bring their restless children to worship.

Bring your children to church. If you don't hear crying, the church is dying. As hard as it might be for you as a parent who's half-asleep, keep on doing what you're doing.

You are an encouragement, and you're starting off your children's lives as you should.

(Author Unknown)



### REMINDERS!

**MONEYBAGS** – remember to pick up a bag at church for your unwanted pennies.

**SPONSORED SLIM** – not to late to start, it runs until 30<sup>th</sup> June 2018. Forms at back of church.

**MOBILE PHONE RECYCLING** – if you have no use for your old phone, donate to LPC – box in church.

**QUIZ SHEETS** – still available £1 per sheet, runs until 31<sup>st</sup> March.



## STEWARDSHIP CAMPAIGN 2019-2020

The Campaign will start with TIME being the focus for 2019-2020 and this will initially be incorporated into a Sunday service, to explore the many different ways this can be used. This will possibly not be until April as the 2019 Annual Stated Meeting and Easter will come first. It is also intended to have informal meetings from time to time over the year to discuss how we're doing, but we will keep you posted when the tea and cake meetings will take place.

We know we are very lucky to have so many willing volunteers for the cafe, coffee mornings, cleaning etc already, but there are many ways that TIME can be interpreted and we want to share and discuss this with you.

It is also our intention to send out a Survey to the congregation in the next few months and from your replies, we are hoping to get the opinions of our members as well as the community. The object of this exercise is to find out what is expected of Lochgilphead Parish Church now and in the future, from yourselves and the community at large and we need your help to achieve this.

The Survey would be strictly anonymous so that we get frank and full answers from everyone, so you won't need to hold back on your opinions!! We need to know exactly what is required of us as a church.

Meanwhile, if you have any suggestions that you would like to share now, please don't hesitate to let us know.

## KNITTING FOR KASAMBA CHURCH IN LILONGWE

In this time of uncertainty on so many fronts both nationally and internationally, there is one thing which never fails and that is that no sooner has a case been filled with baby knitting for Kasamba Church in Lilongwe, than more bags full of knitting are handed in.

From Argyll the cases are taken to Dundee by Ruth Carruthers to whom we are very grateful. In Dundee the Bananabox Charity loads the cases into huge containers for transportation by sea and by land to the headquarters of the Synod of Livingstonia in Mzuzu. From there the cases are taken to Lilongwe and distributed to new born babies through the staff in the maternity unit of the local hospital. It takes some time for containers to be filled by baby clothes and then be sent on to our Partner Church in Malawi.

Hopefully our recent consignment will be dispatched early in March. Many thanks to all who contribute to this blessed cause through their kindness, concern and hard work!

Mollie Hood

	2	4	3	8				
					6			7
	5	8				4		
4				1				
			7		5			
				2				8
		1				6	7	
3			5					
				4	9	2	1	

**Sudoku - medium**  
Solution on back page

## EASYFUNDRAISING

A reminder to everyone of the benefits to Lochgilphead Parish Church of doing your online shopping through **Easyfundraising**. It won't cost you anything extra to do this, just visit their website [www.easyfundraising.org.uk](http://www.easyfundraising.org.uk) to register and specify LPC as your charity, then look for the retailer you wish to buy from, click on to place your order and easyfundraising will do the rest for you. It's as easy as that and everytime you do this, they will donate a percentage of your spend to the church.

**The more people using it, the more our donations will grow.**

They have a huge range of well known companies for you to choose from, including M&S, Boots, Amazon, Boden, Booking.com, Ebay, Dorothy Perkins, Accor Hotels, Insurance companies and Travel companies, to name but a few. So if you're going to buy online anyway, have a look at this website first.

You've got nothing to lose and LPC have everything to gain. Try it!

## LOCHGILPHEAD PARISH CHURCH

### OPEN GARDENS

Last year Margaret Davidson and Jenny Campbell opened their gardens for an afternoon over the summer period to raise funds for the work that is scheduled to be done in the Church over the next few months,

Both were very successful afternoons raising £667.00.

We are looking for two or three more people who are willing to open their gardens this summer. Pick a date when your garden is looking it's best and provide some tea/coffee for those who come along. Entry is by donation.

If you are willing to take part, please let Margaret know and she will arrange to publicise the event.

The rest is up to you.



The Bingo Night scheduled for March 10th has been postponed until later in the year.

### LOCHGILPHEAD PARISH CHURCH COFFEE MORNING

Saturday April 27th  
10.30am-12 noon  
in the hall

Offers of help, donations of home baking and raffle prizes will be most appreciated.

### SOUTH ARGYLL GUILDS TOGETHER

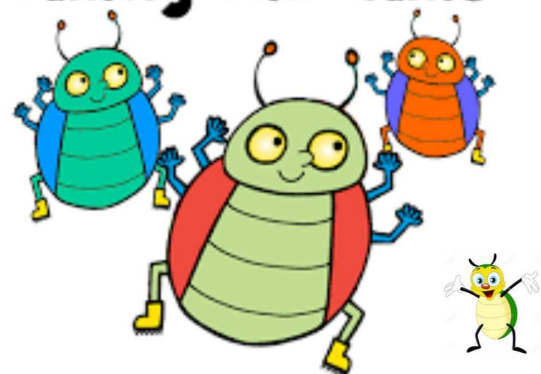


### AGM

Wednesday 13th March  
1.30pm  
Templar Arts & Leisure Centre, Tarbert

### LOCHGILPHEAD PARISH CHURCH

## Beetle Drive Family Fun Game



Wednesday April 10th, 7.00pm

in the hall

Come along with an adult and

join in the fun

No entry charge - donations only

Raffle and Prizes



### Drop In Café

Every  
Wednesday  
10.00am to 3.30pm

We really need some more volunteers to help in the cafe for a couple of hours once or twice a month.

The café is very busy at lunchtimes and extra hands would be much appreciated.

If you would like to help

please contact Margaret on 603784.

## THE GUILD



**GUILD STRATEGY 2018-2021:  
One Journey, Many Roads**

**THEME FOR 2018/2019:  
Seeking the Way**

**12th March AGM & Bring 'n Buy  
26th March Closing Night - Surprise!**

The Guild will meet throughout the session on the 2nd and 4th Tuesday monthly at 7.30pm in the Church Hall and a warm welcome is extended to all members old and new.

See you there!



### DATES OF NEXT MEETINGS:

Thursday  
March 28th  
April 25th

**in the hall  
FUN, FOOD AND  
WORSHIP**

**Exciting Crafts, Stories,  
Songs  
& Activities**

Why not come along and give it a try.

***All children must be  
accompanied  
by an adult.***

**DON'T MISS IT!**

### WORLD MISSION STAMP APPEAL

In aid of  
Church of South India's Othara  
Eco-spirituality Centre

*Please save your old stamps and put  
them in the box in the church hall*



### Let's get Knitting!

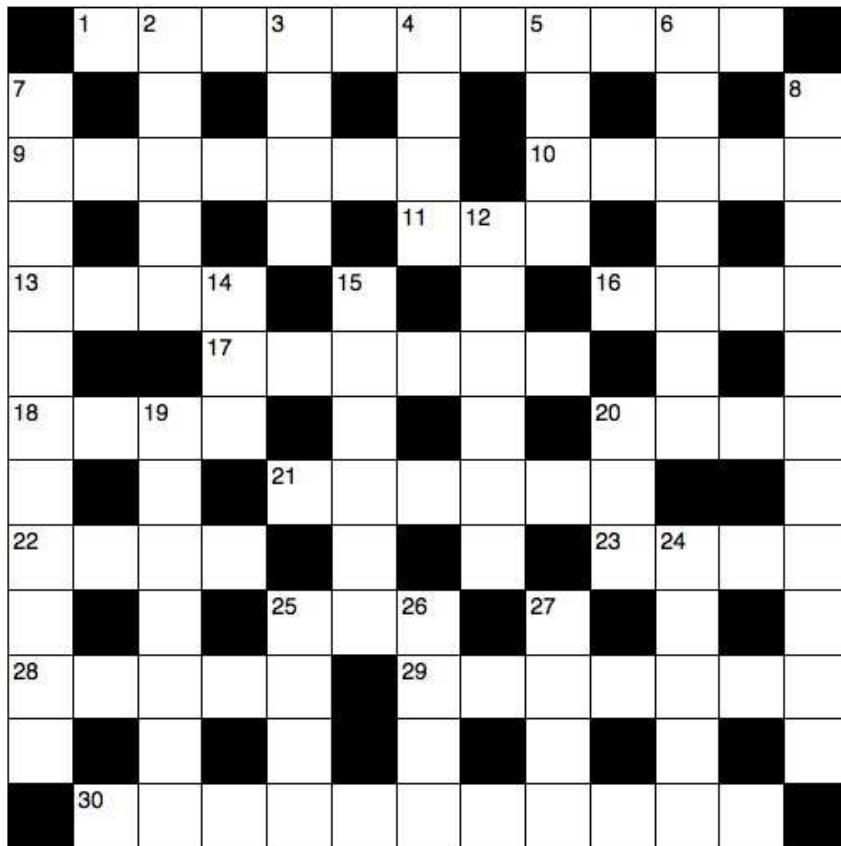
We meet fortnightly in various venues to knit, chat, laugh, learn new techniques and partake of a light supper.

**Meeting on March 6th & 20th  
April 3rd & 17th  
at 7.30pm  
(Venue tbc)**

New members, both experienced and beginners are welcome to come along and join us.

For more information contact Margaret on 01546 603784.

# Crossword



## Grannie

After church, the mother asked her young son if he had enjoyed Sunday School. "Oh yes," he replied. "My new teacher is pretty cool – she is Jesus' grand-mother." Startled, his mother asked what made him think that. "Obvious, she never stops talking about Jesus," he replied.

## Happy

Never miss an opportunity to make others happy, even if you have to leave them alone in order to do it.

## Unique

Always remember you're unique. Just like everyone else.

## Don't lie

If you tell the truth, you don't have to remember anything.

## Experience

Experience is something you don't get until just after you need it.

## Across

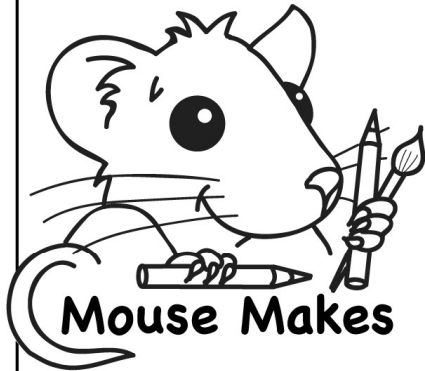
- 1 These letters come between Romans and Galatians (11)  
 9 'You will not — me to the grave' (Psalm 16:10) (7)  
 10 King of Moab to whom the Israelites were subject for 18 years (Judges 3:14) (5)  
 11 Town possessing mineral spring (3)  
 13 Mede (anag.) (4)  
 14 High-fidelity (abbrev.) (4)  
 17 He succeeded his father Rehoboam as king of Judah (1 Kings 14:31) (6)  
 18 A son of Simeon (Genesis 46:10) (4)  
 20 Controversial religious book of the 1970s, The — of God Incarnate (4)  
 21 'He has received from the Father the promised Holy Spirit and has poured out what you — — and hear' (Acts 2:33) (3,3)  
 22 'You — me together in my mother's womb' (Psalm 139:13) (4)  
 23 Edit (anag.) (4)  
 25 'Who has believed our message and to whom has the — of the Lord been revealed?' (Isaiah 53:1) (3)  
 28 Abraham's brother (Genesis 22:23) (5)  
 29 'When Mordecai learned of — that had been — , he tore his clothes' (Esther 4:1) (3,4)  
 30 Sympathetic (Proverbs 11:16) (4-7)

## Down

- 2 'That was why his parents said, "He is — —; ask him"' (John 9:23) (2,3)  
 3 Integrated Services Digital Network (1,1,1,1) 4  
 4 'Saul has slain his thousands, and David his — of thousands' (1 Samuel 18:7) (4)  
 5 Concept (John 8:14) (4)  
 6 'Do we, then, — the law by this faith? Not at all! Rather, we uphold the law' (Romans 3:31) (7)

- 7 Industrious (2 Timothy 2:6) (11)  
 8 'I pray also that the eyes of your heart may be — in order that you may know the hope to which he has called you (Ephesians 1:18) (11)  
 12 'Out of the same mouth come — and cursing' (James 3:10) (6)  
 14 This was how many of the Jewish leaders described Jesus (John 10:20) (3)  
 15 Vitality (Job 20:11) (6)  
 19 He urged David to kill Saul at Hakilah (1 Samuel 26:8) (7)  
 20 'So for a whole year Barnabas and Saul — with the church and taught great numbers of people' (Acts 11:26) (3)  
 24 'Hear, O Israel: The Lord our God, the Lord — —' (Deuteronomy 6:4) (2,3)  
 25 Parched (Matthew 12:43) (4)  
 26 'In the image of God he created him; — and female he created them' (Genesis 1:27) (4)  
 27 Disparagement (Psalm 15:3) (4)

# Kids Corner

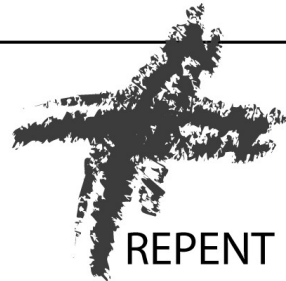


During Lent read through the Gospel of Luke and each day pray for God to help you become more like Jesus

**Lent** is the name given to the **40 days** before Easter and is a time to *pray*, to *read* the bible and to *turn* to God. The first day of Lent is **Ash Wednesday**, a day to *repent* and say *sorry* to God for the wrong things we have *said* or *thought* or *done*.

P W R P W O R D O R G F  
 I S C R I P T U R E O O  
 T O O A L R E A D F D R  
 E R K Y D I T H E L P T  
 M R E M E M B E R E R Y  
 P Y F O R G I V E C E D  
 T S L E N T N R J T P A  
 A S H W E D N E S D A Y  
 T W O R S H I P U E R S  
 I E J E S U S E S N E D  
 O F A S T H I N K Y E Y  
 N I B I B L E T G I V E

Can you find these words in the word search above?  
 LENT • ASH WEDNESDAY • FORTY DAYS  
 JESUS • WILDERNESS • TEMPTATION • PRAY • FAST  
 DENY • REPENT • SORRY • FORGIVE • GIVE • HELP  
 PREPARE • REFLECT • THINK • READ • SCRIPTURE  
 BIBLE • WORD • REMEMBER • WORSHIP • GOD



# Rotas for January/February 2019

	Door Duty	Prayers	Flowers (Contact - E Armstrong)	Readers	Tea/Coffee Duty (Contact - M. Davidson)
<b>Mar</b> 3rd	C Gilmour & A Hunter	I Davidson		R Morrison	S Stankey & M Jacobsen
10th	M MacFadyen & E Munro	M Jacobsen		M Jacobsen	J MacAulay & I MacMillan
17th	S Stankey & I MacArthur	M Taylor		S Stankey	M & I Davidson
24th	I & M Davidson	S Taylor		S Taylor	I MacArthur & E Munro
31st	F Fleming & S Morrison	J Morrison		M MacDonald	A McCrae & tba
<b>April</b> 7th	N & P Cameron	M Davidson		M Davidson	R & D Bowen
14th	K Thompson & T Cameron	I Davidson		K Thompson	S & M Taylor
21st	D & R Bowen	M Jacobsen		I Davidson	J & R Morrison
28th	M Jacobsen & I MacMillan	M Taylor		M Jacobsen	C Ferguson & K Thompson
<b>May</b> 5th	J & R Morrison	S Taylor		J Morrison	J & A Barclay

***If you are unable to carry out any of these duties please arrange a replacement.***

## Services (all at 11.00am except where stated)

<b>March</b> 3rd	Rev Hilda Smith
10th	Rev Hilda Smith
17th	Rev Hilda Smith
24th	
31st	Rev Hilda Smith
<b>April</b> 7th	Rev Hilda Smith
14th	Rev Hilda Smith
21st	Rev Hilda Smith
28th	Rev Hilda Smith

**May** 5th

## Other Events

March 12th, 26th	The Guild, 7.30pm
Every Wednesday	Drop in Cafe, 10.00am - 3.30pm
March 6th, 20th April 3rd, 17th	Knit and Natter Group, 7.30pm
March 28th April 25th	Messy Church, 4.00pm-6.00pm
April 27th	Coffee Mornings 10.30am-12 noon
April 10th	Beetle Drive, 7.00pm

## CROSSWORD ANSWERS

**ACROSS:** 1, Corinthians; 9, Abandon; 10, Eglon; 11, Spa; 13, Deem; 16, Hi-fi; 17, Abjiah; 18, Ohad; 20, Myth; 21, Now see; 22, Knit; 23, Tide; 25, Arm; 28, Nahor; 29, All done; 30, Kind-hearted.  
**DOWN:** 2, Of age; 3, ISDN; 4, Tens; 5, Idea; 6, Nullify; 7, Hardwork-ing; 8, Enlightened; 12, Praise; 14, Mad; 15, Vigour; 19, Abishai; 20, Met; 24, Is one; 25, Arid; 26, Male; 27, Stir.

## ..... and for your diary

March 28th	Messy Church
May 1st, 15th	Knit & Natter
May 25th	Coffee Morning

Sudoku solution

3	1	2	9	4	6	5	7	8
4	8	6	1	7	5	2	9	3
5	7	8	3	2	1	4	6	9
8	6	3	4	2	9	7	5	1
9	4	1	5	6	7	3	8	2
2	5	7	3	1	8	9	6	4
6	9	3	4	2	6	1	8	7
7	2	7	8	2	6	1	8	5
1	3	8	2	6	5	4	9	7
9	1	5	9	7	8	3	4	6

## CHURCH CONTACTS

Minister: Rev Hilda Smith 01546 602238  
E-mail: HSmith@churchofscotland.org.uk

Session Clerk: Sandy Taylor 01546 606218

Fabric Convenor/ Hall Lets: Ian Davidson 01546 603784

Editor: Roberta Bowen, Rroups End, Kilmory Road,  
Lochgillhead PA31 8SZ E-mail: drbowen@btinternet.com  
Tel: 01546 606151

